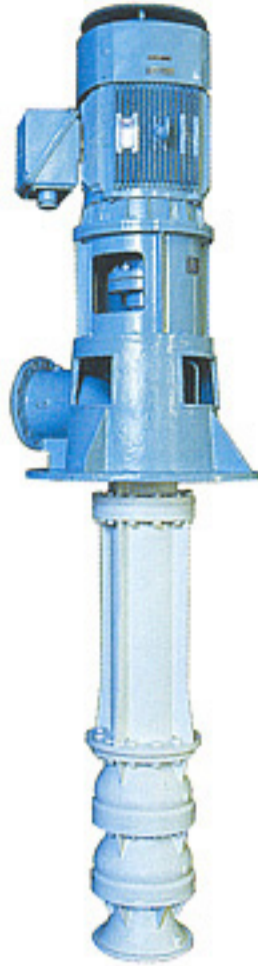


SHIN SHIN MARINE



 SHIN SHIN MACHINERY CO., LTD.



■ Applications

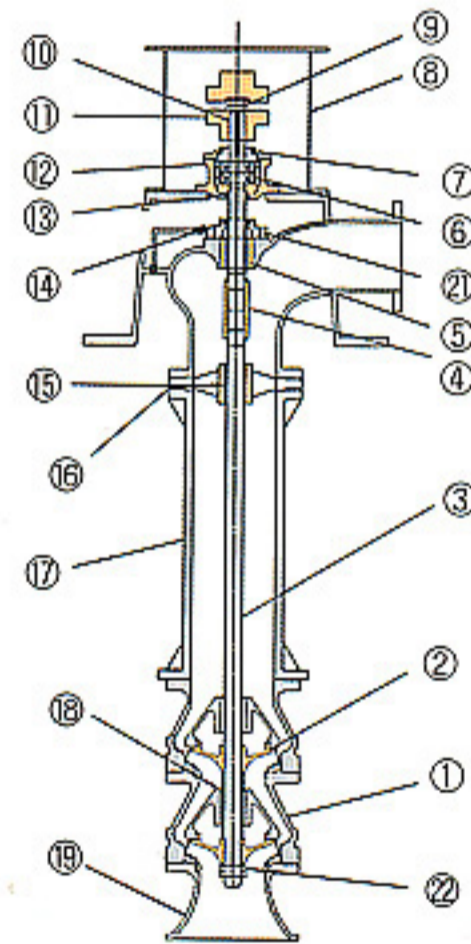
Lubricating oil pump

■ Principal Particulars

Item	Model	SDF2V200A	SDF2V200B	SDF2V250A	SDF2V250B	SDF2V300	SDF2V350	SDF2V450
Rotation		Clockwise viewed from driver end						
Discharge bore (mm)		200	200	250	250	300	350	450
Ball bearing		7300 type						
Service life (Hr)		Abv.60,000hr						
Required min.LO level (mm)		350	350	350	500	500	450	650
Stuffing box seal		Special seal(oil seal)						

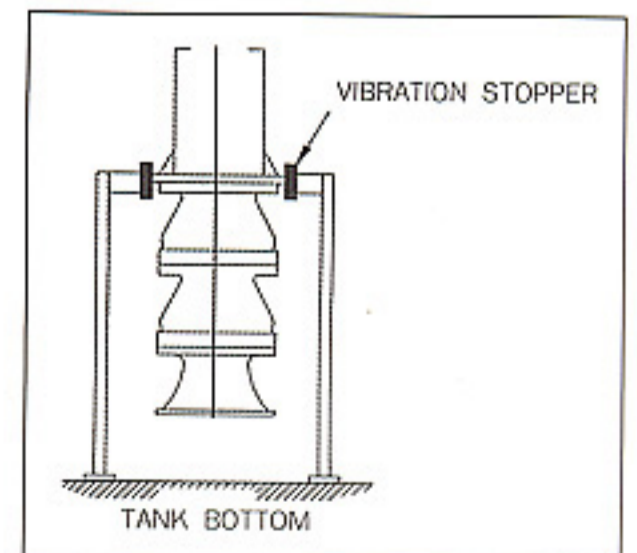
■ Standard Materials

Part No.	Name Of Part	REQ. NO. FOR 1PUMP	MATERIAL	
			Name	KS
1	GUIDE CASING	2	CAST IRON	GC200
2	IMPELLER	2	BRONZE	BC6
3	LOWER COUPLING	1	CARBON STEEL	SM45C
4	SHAFT COUPLING	1	STAINLESS STEEL	STS304
5	METAL BEARING		LEADED TIN BRONZE	LBC4
6	BALL BEARING	1	BEARING STEEL	STB2
7	BEARING COVER	1	CAST IRON	GC200
8	MOTOR FRAME	1	STEEL	SS41
9	COUPLING NUT	1	STEEL	SS41
10	UPPER SHAFT	1	CARBON STEEL	SM45C
11	PUMP COUPLING	1	CAST IRON	GC200
12	BEARING HOUSING	1	CAST IRON	GC200
13	OIL SEAL	1	RUBBER	
14	OIL SEAL COVER		BRONZE	BC6
15	BEARING METAL	1	BRONZE	BC6
16	METAL HOUSING	1	CAST IRON	GC200
17	COLUMN PIPE	1	STEEL	SS41
18	INTERMEDIATE BEARING	2	CAST IRON	GC200
19	SUCTION BELL	1	CAST IRON	GC200
21	OIL SEAL	2	RUBBER	
22	IMPELLER NUT	2	STAINLESS STEEL	STS304

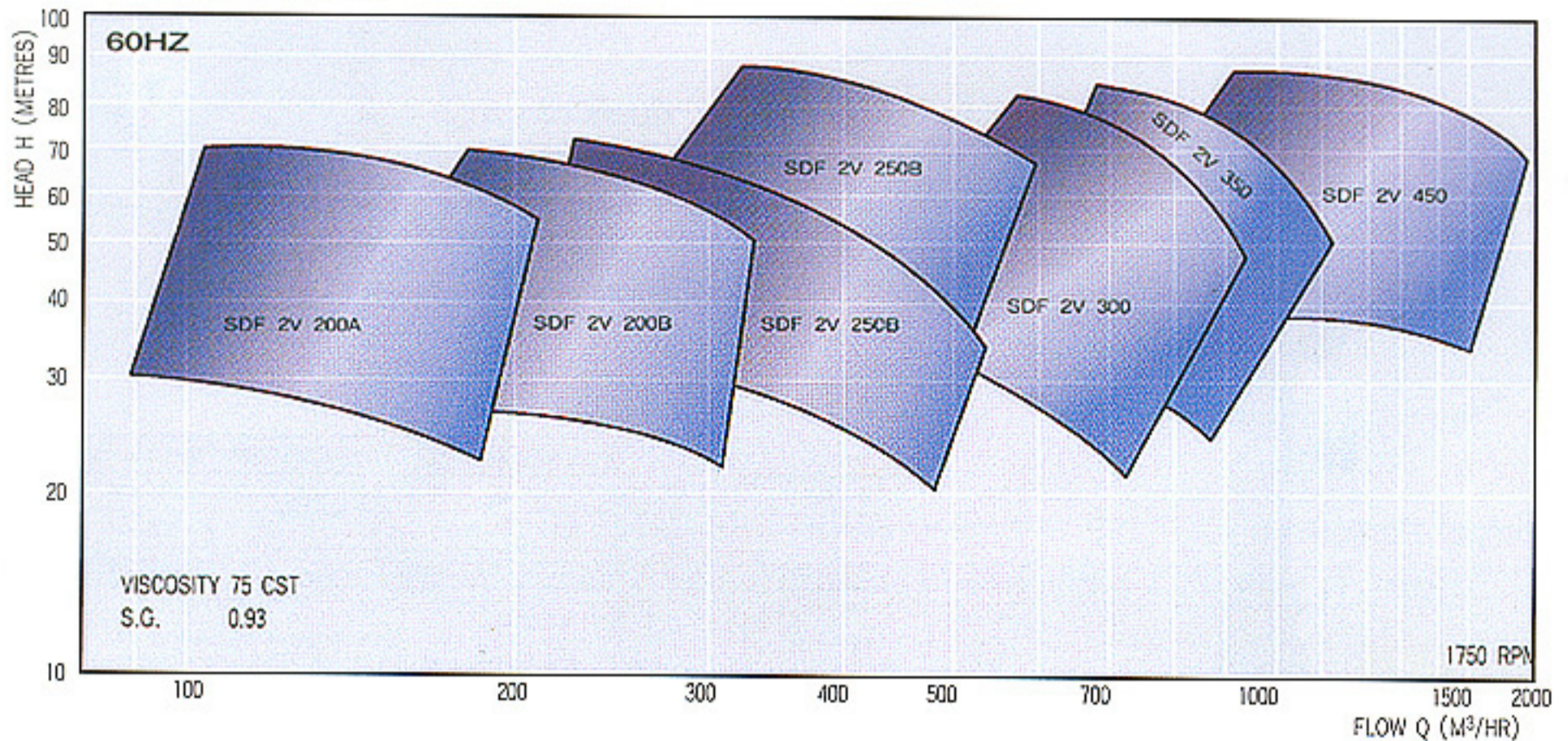


■ Vibration Stopper

The long shaft pump experiences abnormal movement due to the shaking of the LO caused by the ship's rolling and pitching. In order to prevent this, the flange for fastening the casing must be provided with a vibration stopper from the tank.



■ Selection of Pump Model



■ Output of Motor

Because of high LO viscosity at cold startup, capacity decreases and shaft horse power increases as shown in the chart at right. Accordingly, motor output is determined by multiplying required shaft horse power by correction factor so that motor is not overloaded at cold startup. Max. shaft horse power

at cold startup.....Required BHP × C
Motor output.....Max. BHP × 1.03~1.05

But required shaft horse power is shown in selection chart or calculated by following method of computation

Required shaft horse power
 $0.00272WQ \times \left(\frac{10P}{W} + H \right) \times \frac{1}{\eta}$ (kW)

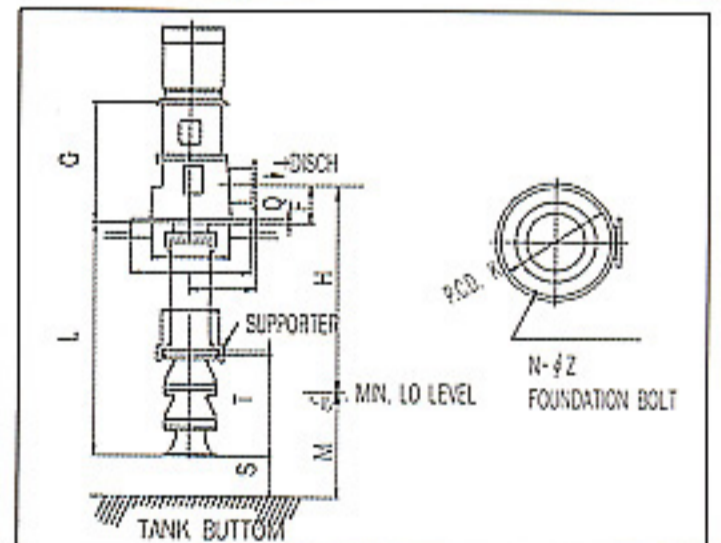
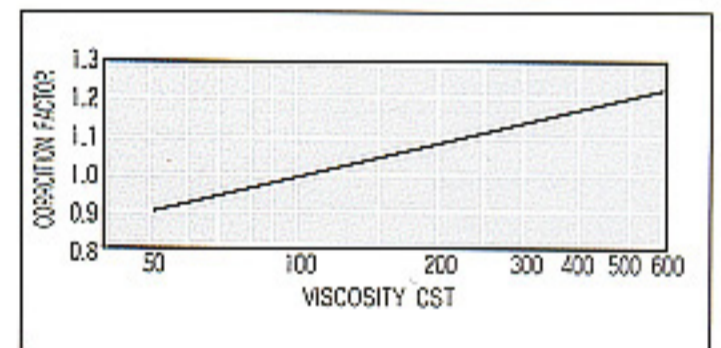
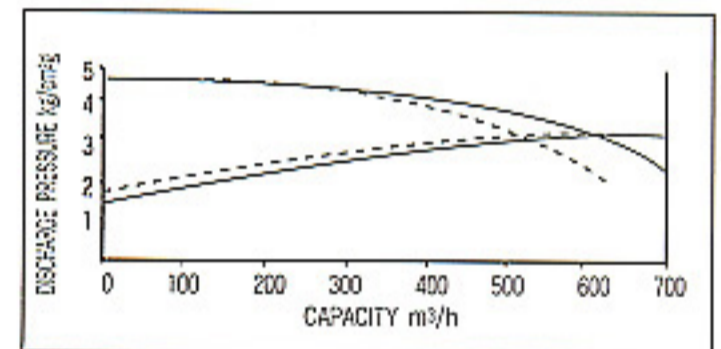
- Where : C..... Correction factor(Chart at right)
Q..... Pump capacity(m³/h)
P..... Discharge pressure(kg/cm²)
W..... Specific gravity of L.O
H..... Height from discharge flange to minimum oil level(m)
 η Pump efficiency in normal operation

■ Standard Accessories

- Discharge pressure gauge 1
- Gauge board 1
- Gauge root valve 1

■ Standard Spare Parts

- 1 pump set of the following spare is supplied for 1 ship.
- Ball bearing
- Coupling bolt, nut & washer, rubber ring
- Bearing bush
- Oil seal
- Complete set of rotating element(if required)



Dimensions:mm

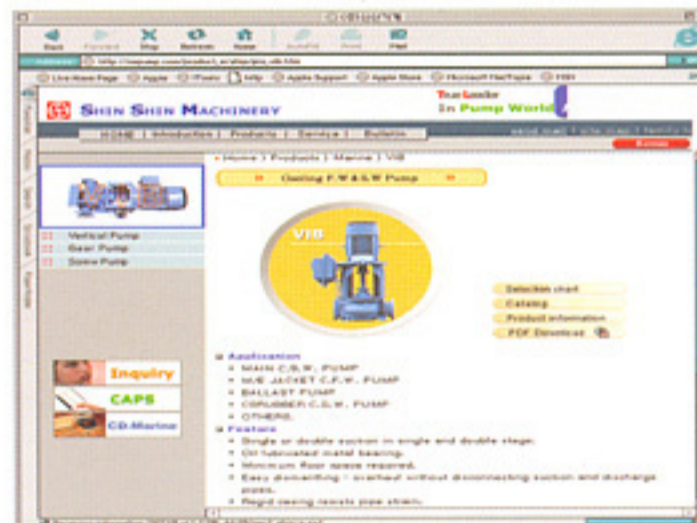
Model	A	B	C	E	F	G	K	M	Q	S	T	N	Z
SDF 2V 200A	500	700	375	400	265	1015	650	350	30	100	614	16	27
SDF 2V 200B	500	700	375	400	265	1015	650	350	30	100	770	16	27
SDF 2V 250A	550	920	500	500	300	977	850	350	30	100	790	16	27
SDF 2V 250B	550	920	500	500	300	977	850	500	30	100	1150	16	27
SDF 2V 300	550	950	500	520	310	1210	850	500	30	50	1160	16	27
SDF 2V 350	650	940	540	600	450	1338	880	450	35	50	1400	16	27
SDF 2V 450	850	1080	600	800	400	1475	1000	650	40	50	1100	24	27





Homepage : <http://www.sspump.com>

E-mail : sales@sspump.com



SHIN SHIN MACHINERY CO., LTD.

Head Office & Factory

940-13 Yerim-ri, Chongwan-Myen, Gijang-Gun, Pusan, Korea.

Phone : (051) 727-5300~4

Telefax: (051) 727-5305~8

Seoul Office

Phone : +82-2-752-8419/8403, 778-8832

Telefax: -82-2-755-3156